

System pro *E* comfort

Consumer units

1



Consumer units

Contents

Consumer units for hollow-wall and for flush-mounting	1/2
Media enclosures	1/8
Control panels for flush-mounting	1/9
Modular consumer units for wall-mounting	1/28
Hood-type consumer units for wall-mounting	1/32
Compact consumer units UAI / Hood-type consumer units AN	1/40

Applicable standards:
DIN VDE 0603-1
DIN 43871

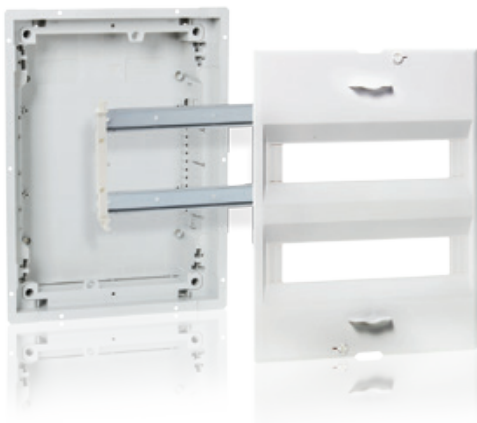
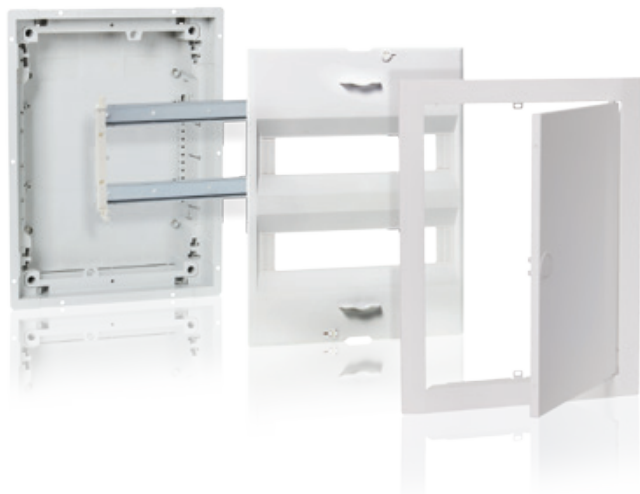
Consumer units UK500

1



Consumer units UK500

Complete version and basic version



Consumer units UK500N – flush-mounted consumer units

Complete version with trim frame and door

IP30, , , , up to I_n 63 A

Consumer unit DIN VDE 0603-1, DIN 43871

Available in 1 up to 4 row versions as flush-mounted consumer units

Upgradeable for hollow-wall mounting using UZ90P4

Wall box:

- non-warp, break-proof, non-flammable, low-halogen plastic

- with cable strain relief comb

- with detachable cable inlets

Wall grips

Removable device support

With N/PE Quick-terminals

Cover with 90° quick-action screws, lead-sealable,

45 mm slots for 12 devices, expandable to 14

Labelling system

Trim frame and sheet steel door, adjustable for uneven surface,

colour: white, RAL 9016

Consumer units UK500BN – flush-mounted consumer units

Basic version without trim frame and door

IP30, , , , up to 63 A

Consumer unit DIN VDE 0603-1, DIN 43871

Available in 1 up to 4 row versions as flush-mounted consumer units

Upgradeable for hollow-wall mounting using UZ90P4

Wall box:

- non-warp, break-proof, non-flammable, low-halogen plastic

- with cable strain relief comb

- with detachable cable inlets

Wall grips

Removable device support

With N/PE Quick-terminals

Cover with 90° quick-action screws, lead-sealable,

45 mm slots for 12 devices, expandable to 14

Labelling system

*in connection with UZ90P4

Door "art line" for UK500 series

Elegance at the heart of your home

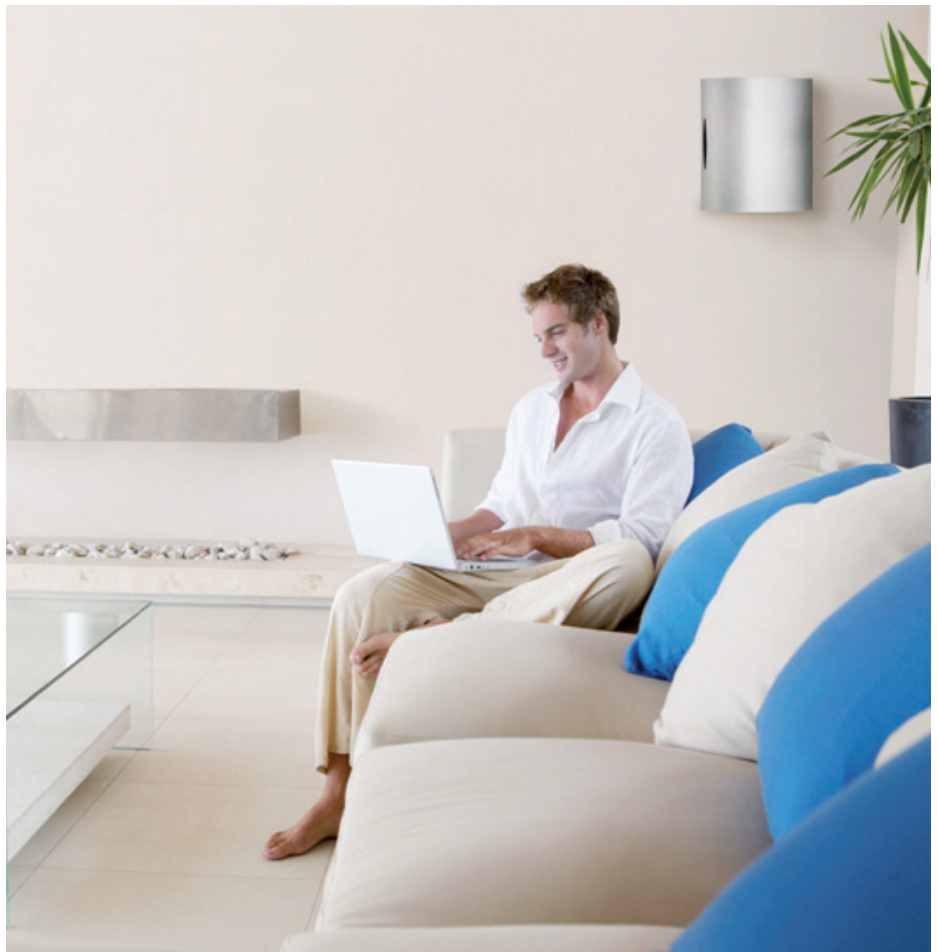
1

art line

Functional yet elegant - here's a perfect example of how easy it can be to combine these essential features.

Beautiful and perfectly formed - "art line" model with its brushed stainless steel is an embodiment of the design principle based on reducing things right down to the essentials.

The "art line" ennobles the UK500 version. "art line" opens the door to a new world of aesthetics in consumer unit design and has already become a classic in its own right.



Brushed stainless steel



Door "addition line" for UK500 series

An eye-catching focal point or your individual interior design

addition line

The "addition line" series of picture frames is quite literally as pretty as a picture. You would never believe that these high-quality ornamental items conceal a technical product.

Whether in brushed aluminium or in white colour, no other solution offers more individuality and flexibility for matching personal taste and décor.



1

White



Brushed aluminium



Door "colour line" for UK500 series

A decorative touch to lend personality to your space

1

colour line

"Colour line" gives a splash of colour to the functional and aesthetic lines of the standard trim frame and its door. The coated versions, available in the colours light grey, silver and anthracite, open up whole new creative possibilities for consumer units.



Light grey RAL 7035

Silver RAL 9006

Anthracite RAL 7016



Door "vision line" for UK500 series

To provide an aesthetic insight into the consumer units

vision line

The transparent doors for the UK500 consumer unit series have been further developed and optimised. Aesthetic and monolithic they offer a maximized view to the interior of the UK500.

The high quality models of impact resistant, high gloss polished plastic with a blue-grey shade, are glow wire tested up to 850°C.

Its self extinguishing polycarbonate material has a very high mechanical impact strength (IK 08), and being colourfast, offers an optimal view with signal lamps for example. A visual inspection of the status of individual devices is possible without opening the door.



1



Media enclosures "media line"

Communications and multimedia technology at a glance

1

media line

The rapid development of new communications and information technologies means that ever more media and communication devices are to be found in homes. Hardly anyone wants to do without the benefits that technology offers. A structured cabling arrangement is thus indispensable for a future-proofed and well-ordered installation.

The new media enclosures help you achieve this goal. You have all your media applications at a glance with the central assembly of media and communications technology in distribution cabinets.



Flush-mounted wall box
with perforated sheet steel
mounting plate and a DIN rail



Doors with ventilation holes
RAL 9016 (accessory)
For other design doors, see page 1/22



Consumer units with "tech line" control panel

Intelligently taking functional aesthetics to the next level

tech line

Thanks to the "tech line" control panel, the UK500 series consumer units offer that extra bit more. The monitoring and operation such as the control of lighting systems is taken care of by the control panel. In a way that's both easy-to-view and decorative. The control panel can be finished by the user or supplied already wired and printed by the factory.



Consumer units UK500

Mounting

1

Installation - uncompromisingly simple, quick and well thought-out

The wall grips, included as standard, have a dual purpose. On the one hand, they allow the mounting in two additional depths. On the other, they can be used as spacers where several consumer units are to be placed side by side.

The removable cable inlet allows easy insertion of incoming and outgoing cables and uses a quick, singlehand-operated push-and-stay design.

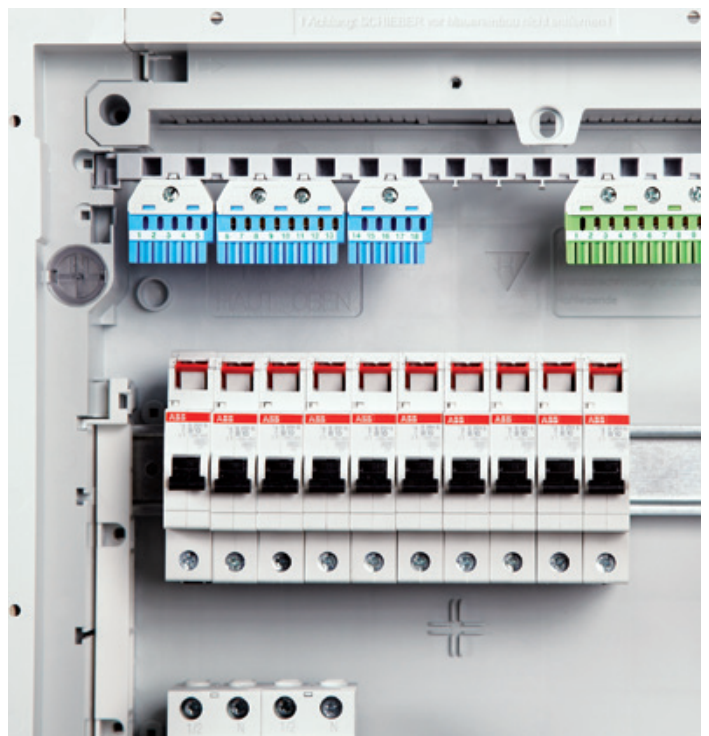
Simple push-and-stay technology and all-round ease of installation

The wall box is non-warp, non-breakable and non-flammable. It offers a large wiring space. The strain-relief comb for neat cabling is an integral part of the wall box.

There are ample further preformed cable entry points on the sides and back of the wall box.

The device support can be snapped in and is installed quickly without tools. Here too, a variety of common installation techniques have been catered for - the device support can also be fixed in position using screws. The DIN rail is double-insulated as standard in all variants.

Professional cable entry in the wall box. Cable strain relief comb.



Consumer units UK500

Mounting

If required, the slots in the cover can be extended from 12 to accommodate 14 devices. The cover is fixed into position by two 90° quick-action screws which can be sealed.

All UK500 series consumer units are suitable for hollow-wall mounting. To do this, you only need the UZ90P4 hollow wall mounting set. No special hollow wall consumer unit is required. Upgrading is incredibly simple - just as easy as the hollow-wall mounting itself.

No screws, yet nothing can slip. Fastening is as easy as fastening cable ties. The hollow wall set can also be released if needed. The pull-strap will be twisted off after the work is completed.

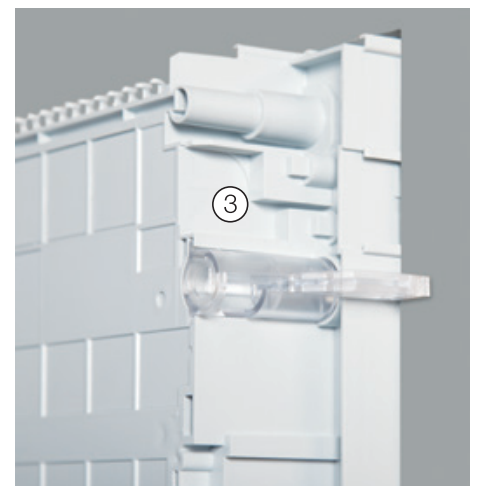
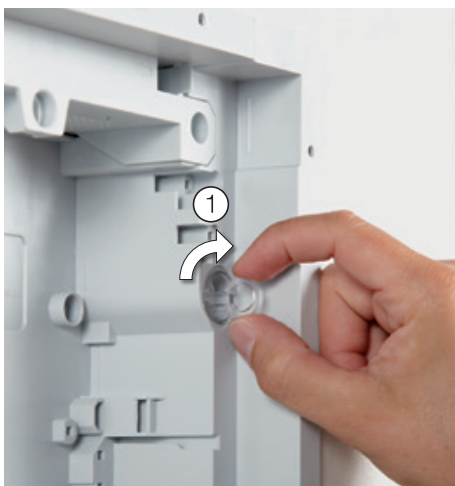


Trim frame and door are easy to remove. Adjustable for uneven surfaces, sealable cover with 90° quick-action screws.

The quickest way for hollow-wall mounting

The hollow-wall set is placed inside the consumer unit.

1. Turn the tab to put the wall grip into position.
2. Then just pull
3. and it's done.



Delivery options UK500 series

Complete consumer unit / Hollow-wall mounting set

1 The complete version UK500N with trim frame and door

Wall box with device support, wall grips, removable DIN rails, cover, trim frame, door, N/PE Quick-terminals and labelling system.



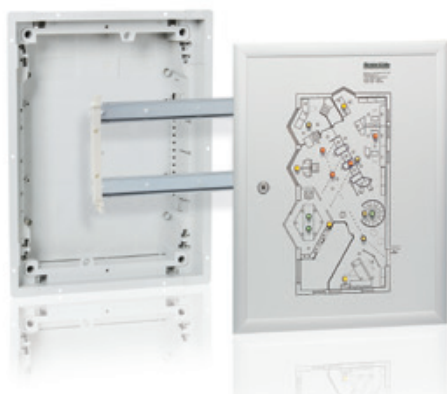
Media enclosure complete version UK500MV with trim frame and door with ventilation holes

Wall box with perforated sheet steel mounting plate, wire holders, DIN rail, wall grips, double socket with euro-plug insert, trim frame and door with ventilation holes.



Consumer unit with control panel FPT500 with trim frame and aluminium control panel

Wall box with device support, wall grips, removable DIN rails. Aluminium control panel unprinted and unwired. The control panel can be finished by the user or supplied already wired and printed by the factory. Control panels must only be mounted in vertical direction. Door hinged right.



Hollow-wall mounting set UZ90P4

All consumer units are designed and prepared for hollow-wall mounting

Wall boxes can be fitted with the UZ90P4 hollow-wall mounting set and are then ready for hollow-wall mounting.

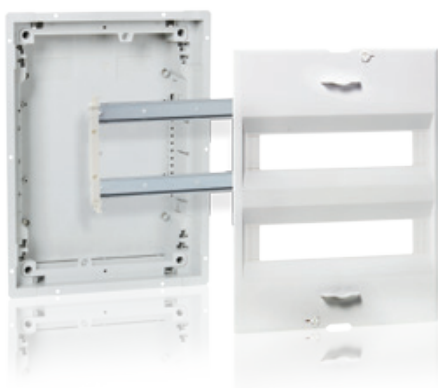


Delivery options UK500 series

Basic version and media enclosures / Design doors

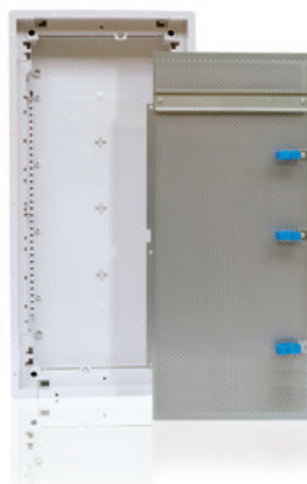
The basic version UK500BN without trim frame and door

Wall box with device support, wall grips, removable DIN rails, cover, N/PE Quick-terminals and labelling system.



Media enclosure UZM500MV without trim frame and door

Wall box with perforated sheet steel mounting plate, wire holder, DIN rail and wall grips.



Design doors for basic version and media enclosures



art line
Brushed stainless steel



colour line
Light grey RAL 7035



colour line
Silver RAL 9006



colour line
Anthracite RAL 7016



addition line
Picture frame door
Brushed aluminium



addition line
Picture frame door
White



vision line
Transparent door

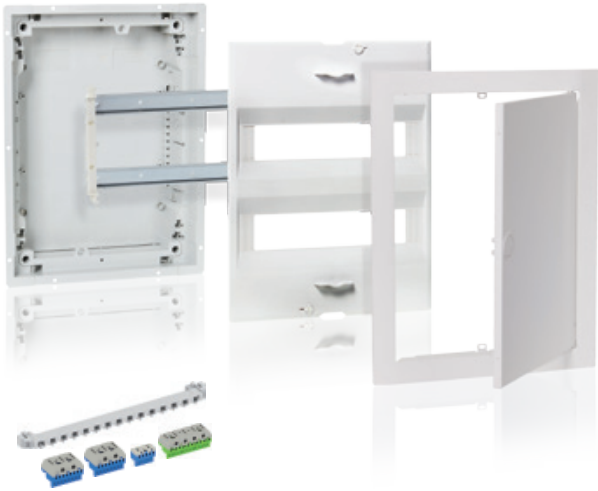


media line
White RAL 9016
with ventilation holes

Complete version UK500N with trim frame and door

With N/PE quick-terminals

1



UK524N3 with mounted N/PE quick-terminals (Example)

Flush-mounted consumer units – UK500N, IP30

I_n up to 63 A

Consumer unit DIN VDE 0603-1, DIN 43871

Available in 1 up to 4 row versions as flush-mounted consumer units

Upgradeable for hollow-wall mounting using UZ90P4

Wall box:

- non-warp, break-proof, non-flammable, low-halogen plastic
- with cable strain relief comb
- with detachable cable inlets

Wall grips

Removable device support

With N/PE Quick-terminals

Cover with 90° quick-action screws, lead-sealable

45 mm slots for 12 devices, expandable to 14

Labelling system

Trim frame and sheet steel door, adjustable for uneven surface

Colour: White, RAL 9016

*In connection with UZ90P4



UK512N2



UK524N3



UK536N3



UK548N3



Article	H x W x D in mm	SU	Type	Ord. no.	Price
Flush-mounted consumer units, 1-row					
Niche dimensions	335 x 350 x 95	12 / 13*	UK512N2	2CPX031281R9999	
Wall cut out dimensions for hollow-wall mounting	308 x 327 x 88				
With mounted N/PE quick-terminals:					
Quick-carrier: ZK11					
Quick-terminals: ZK82B, ZK51B, ZK113G					
Flush-mounted consumer units, 2-row					
Niche dimensions	460 x 350 x 95	24 / 28*	UK524N3	2CPX031282R9999	
Wall cut out dimensions for hollow-wall mounting	433 x 327 x 88				
With mounted N/PE quick-terminals:					
Quick-carrier: ZK11					
Quick-terminal: 2 x ZK82B, ZK50B, ZK144G					
Flush-mounted consumer units, 3-row					
Niche dimensions	585 x 350 x 95	36 / 41*	UK536N3	2CPX031283R9999	
Wall cut out dimensions for hollow-wall mounting	558 x 327 x 88				
With mounted N/PE quick-terminals:					
Quick-carrier: ZK11					
Quick-terminals: 2 x ZK113B, ZK175G, ZK50BT					
Flush-mounted consumer units, 4-row					
Niche dimensions	710 x 350 x 95	48 / 56*	UK548N3	2CPX031284R9999	
Wall cut out dimensions for hollow-wall mounting	683 x 327 x 88				
With mounted N/PE quick-terminals:					
Quick-carrier: ZK11					
Quick-terminals: ZK144B, ZK82B, ZK206G, ZK50BT					

> For the technical specifications of the UK500 trim frame dimensions, see page 1/26

Basic version UK500BN without trim frame and door

With N/PE quick-terminals



UK524BN3 with mounted N/PE quick-terminals (Example)



UK512BN2



UK524BN3



UK536BN3



UK548BN3



Flush-mounted consumer units – UK500BN, IP30

I_n up to 63 A

Consumer unit DIN VDE 0603-1, DIN 43871

Available in 1 up to 4 row versions as flush-mounted consumer units

Upgradeable for hollow-wall mounting using UZ90P4

Wall box:

- non-warp, break-proof, non-flammable, low-halogen plastic
- with cable strain relief comb
- with detachable cable inlets

Wall grips

Removable device support

With N/PE Quick-terminals

Cover with 90° quick-action screws, lead-sealable

45 mm slots for 12 devices, expandable to 14

Labelling system

*in connection with UZ90P4

Article	H x W x D in mm	SU	Type	Ord. no.	Price
Flush-mounted consumer units, 1-row					
Niche dimensions	335 x 350 x 95	12 (14*)	UK512BN2	2CPX031285R9999	
Wall cut out dimensions for hollow-wall mounting	308 x 327 x 88				
With mounted N/PE quick-terminals:					
Quick-carrier: ZK11					
Quick-terminals: ZK82B, ZK51B, ZK113G					
Flush-mounted consumer units, 2-row					
Niche dimensions	460 x 350 x 95	24 / 28*	UK524BN3	2CPX031286R9999	
Wall cut out dimensions for hollow-wall mounting	433 x 327 x 88				
With mounted N/PE quick-terminals:					
Quick-carrier: ZK11					
Quick-terminals: 2 x ZK82B, ZK50B, ZK144G					
Flush-mounted consumer units, 3-row					
Niche dimensions	585 x 350 x 95	36 (42*)	UK536BN3	2CPX031287R9999	
Wall cut out dimensions for hollow-wall mounting	558 x 327 x 88				
With mounted N/PE quick-terminals:					
Quick-carrier: ZK11					
Quick-terminals: 2 x ZK113B, ZK175G, ZK50BT					
Flush-mounted consumer units, 4-row					
Niche dimensions	710 x 350 x 95	48 / 56*	UK548BN3	2CPX031288R9999	
Wall cut out dimensions for hollow-wall mounting	683 x 327 x 88				
With mounted N/PE quick-terminals:					
Quick-carrier: ZK11					
Quick-terminals: ZK144B, ZK82B, ZK206G, ZK50BT					

*In connection with a standard door, "vision line" or "colour line" with TIP-in closure there will be one space unit less.

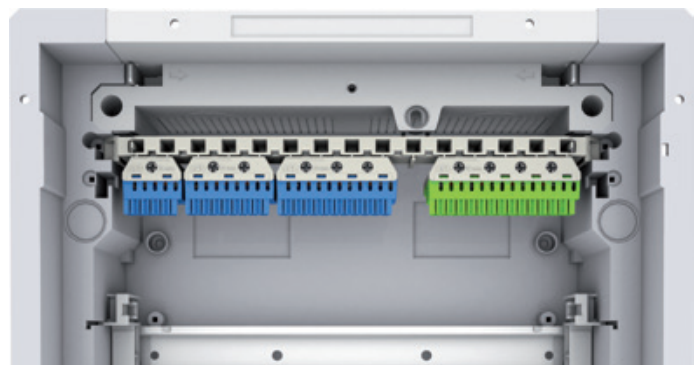
> For the technical specifications of the UK500 trim frame dimensions, see page 1/26

N/PE quick-terminals

Standardised, future-oriented and flexible

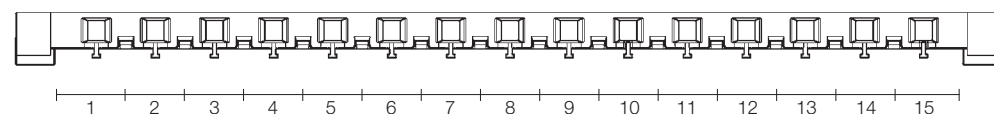
1 Tidy and flexible installation

The N/PE Quick-terminals simplify your work: Just choose the right terminal blocks and plug them in!
Extremely flexible in terms of expandability, these N/PE Quick-terminals are unmatched for safe, efficient and future-oriented conductor connections.



Product benefits

- Flexible terminal system for several N power circuits:
Screw connections: 2.5 to 25 mm² with steep conductor;
up to 25 mm² with flexible conductor with sleeve;
spring terminals: 1.5 to 4 mm² with steep conductor; 2.5 mm² with flexible conductor with sleeve
- Optimal when using several residual current circuit breakers (RCDs)
- Ease of expansion using connecting bridges
- Precise assignment of the terminal blocks (clear colour coding: N = blue, PE = yellow-green)
- Easy labelling of the terminals (DIN VDE 0603 Part 1) using pre-printed, self-adhesive number strips
- Wide range of applications: can be used with the UK500 and A300 consumer unit series, in all compact distribution boards, and with all meter-, wall-mounting and floor-standing cabinets.



quick carrier type ZK11

units

N/PE Klemmblöcke	N Quick-Steckklemmen	Schraubanschluss-technik	Federklemm-technik	PE Quick-Steckklemmen	Schraubanschluss-technik	Federklemm-technik
	ZK50B	0 x 25 mm ²	5 x 1,5 - 4 mm ²	-	-	-
	ZK51B	1 x 25 mm ²	5 x 1,5 - 4 mm ²	ZK51G	1 x 25 mm ²	5 x 1,5 - 4 mm ²
	ZK82B	2 x 25 mm ²	8 x 1,5 - 4 mm ²	ZK82G	2 x 25 mm ²	8 x 1,5 - 4 mm ²
	ZK113B	3 x 25 mm ²	11 x 1,5 - 4 mm ²	ZK113G	3 x 25 mm ²	11 x 1,5 - 4 mm ²
	ZK144B	4 x 25 mm ²	14 x 1,5 - 4 mm ²	ZK144G	4 x 25 mm ²	14 x 1,5 - 4 mm ²
	ZK175B	5 x 25 mm ²	17 x 1,5 - 4 mm ²	ZK175G	5 x 25 mm ²	17 x 1,5 - 4 mm ²
	ZK206B	6 x 25 mm ²	20 x 1,5 - 4 mm ²	ZK206G	6 x 25 mm ²	20 x 1,5 - 4 mm ²
	ZK50BT	0 x 25 mm ²	5 x 1,5 - 4 mm ²	-	-	-

N/PE quick-terminals

Accessories / equipment with UK500BN



ZK113B



ZK50BT



ZK113G



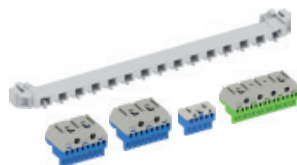
ZK10P10



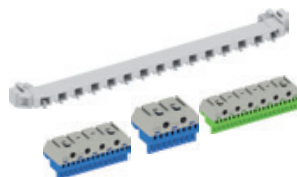
ZK11



ZK15



ZK210



ZK211

Article	Number of terminals 1.5 - 4 mm ²	Number of terminals 2.5 - 25 mm ²	External dimensions H x W x D in mm	Pieces	Type	Ord. no.	Price
N Quick-terminals For quick carriers	5 x 1,5 - 4	0 x 25	23 x 32 x 21	1	ZK50B	2CPX062750R9999	
	5 x 1,5 - 4	1 x 25	32 x 32 x 31	1	ZK51B	2CPX062751R9999	
	8 x 1,5 - 4	2 x 25	32 x 49 x 31	1	ZK82B	2CPX062752R9999	
	11 x 1,5 - 4	3 x 25	32 x 65 x 31	1	ZK113B	2CPX062753R9999	
	14 x 1,5 - 4	4 x 25	32 x 82 x 31	1	ZK144B	2CPX062754R9999	
	17 x 1,5 - 4	5 x 25	32 x 98 x 31	1	ZK175B	2CPX062755R9999	
	20 x 1,5 - 4	6 x 25	32 x 115 x 31	1	ZK206B	2CPX062756R9999	
N Quick-terminal with adapter ZK15 For lateral assembly to the UK5... , A3... or for fastening to the DIN rail	5 x 1,5 - 4	0 x 25	28 x 39 x 25	1	ZK50BT	2CPX062745R9999	
PE Quick-terminals For quick carriers	5 x 1,5 - 4	1 x 25	32 x 32 x 31	1	ZK51G	2CPX062757R9999	
	8 x 1,5 - 4	2 x 25	32 x 49 x 31	1	ZK82G	2CPX062758R9999	
	11 x 1,5 - 4	3 x 25	32 x 65 x 31	1	ZK113G	2CPX062759R9999	
	14 x 1,5 - 4	4 x 25	32 x 82 x 31	1	ZK144G	2CPX062760R9999	
	17 x 1,5 - 4	5 x 25	32 x 98 x 31	1	ZK175G	2CPX062761R9999	
	20 x 1,5 - 4	6 x 25	32 x 115 x 31	1	ZK206G	2CPX062762R9999	
Connecting bridges for Quick-terminals				10	ZK10P10	2CPX062763R9999	
Quick carriers For consumer units UK5... Usable width for Quick-terminals 247 mm				1	ZK11	2CPX064980R9999	
Adapter for ZK50B Engaging the ZK50B N Quick-terminal in the adapter ZK15, leads to ZK50BT to be laterally fastened UK5... , A3 or to the DIN rail				1	ZK15	2CPX064984R9999	
N/PE quick-terminal-set for UK... In combination with quick-carrier ZK11 and quick-terminals: ZK82B: N 2 x 25 + 8 x 4 mm ² ZK82B: N 2 x 25 + 8 x 4 mm ² ZK50B: N 5 x 4 mm ² ZK144G: PE 4 x 25 + 14 x 4 mm ²				1 Set	ZK210	2CPX063128R9999	
N/PE quick-terminal-set for UK... In combination with quick-carrier ZK11 and quick-terminals: ZK144B: N 4 x 25 + 14 x 4 mm ² ZK82B: N 2 x 25 + 8 x 4 mm ² ZK206G: PE 6 x 25 + 20 x 4 mm ²				1 Set	ZK211	2CPX063129R9999	

Complete version UK500 with trim frame and doors

With screwable N/PE terminals

1



2CPX077600R9999

UK510E



2CPX077601R9999

UK520E



2CPX077602R9999

UK530E



2CPX077603R9999

UK540E

Article	H x W x D in mm	SU	Type	Ord. no.	Price
Flush-mounted consumer units, 1-row					
Niche dimensions for flush-mounting					
Wall cut out dimensions for hallow wall mounting					
With screwable N/PE terminals and sheet steel door	335 x 350 x 95 308 x 327 x 88	12 (13)	UK510E	2CPX077600R9999	
With screwable N/PE terminals and transparent door	335 x 350 x 95 308 x 327 x 88	12 (13)	UK510ETT	2CPX031017R9999	
Without N/PE terminals	335 x 350 x 95 308 x 327 x 88	12 (13)	UK510KE	2CPX031001R9999	
With screwable N/PE terminals	335 x 350 x 95	12 (13)	UK510SN	2CPX030819R9999	
With sheet steel door and cable inlet for tubes	308 x 327 x 88				
Flush-mounted consumer units, 2-row					
Niche dimensions for flush-mounting					
Wall cut out dimensions for hallow wall mounting					
With screwable N/PE terminals and sheet steel door	460 x 350 x 95 433 X 327 x 88	24 (28)	UK520E	2CPX077601R9999	
With screwable N/PE terminals and transparent door	460 x 350 x 95 433 X 327 x 88	24 (28)	UK520ETT	2CPX031018R9999	
Without N/PE terminals	460 x 350 x 95 433 X 327 x 88	24 (28)	UK520KE	2CPX031002R9999	
With screwable N/PE terminals	460 x 350 x 95	24 (28)	UK520SN	2CPX030820R9999	
With sheet steel door and cable inlet for tubes	433 X 327 x 88				
Flush-mounted consumer units, 3-row					
Niche dimensions for flush-mounting					
Wall cut out dimensions for hallow wall mounting					
With screwable N/PE terminals and sheet steel door	585 x 350 x 95 558 X 327 x 88	36 (41)	UK530E	2CPX077602R9999	
With screwable N/PE terminals and transparent door	585 x 350 x 95 558 X 327 x 88	36 (41)	UK530ETT	2CPX031019R9999	
Without N/PE terminals	585 x 350 x 95 558 X 327 x 88	36 (41)	UK530KE	2CPX031003R9999	
With screwable N/PE terminals	585 x 350 x 95	36 (41)	UK530SN	2CPX030821R9999	
With sheet steel door and cable inlet for tubes	558 X 327 x 88				
Flush-mounted consumer units, 4-row					
Niche dimensions for flush-mounting					
Wall cut out dimensions for hallow wall mounting					
With screwable N/PE terminals and sheet steel door	710 x 350 x 95 683 X 327 x 88	48 (56)	UK540E	2CPX077603R9999	
With screwable N/PE terminals and transparent door	710 x 350 x 95 683 X 327 x 88	48 (56)	UK540ETT	2CPX031020R9999	
Without N/PE terminals	710 x 350 x 95 683 X 327 x 88	48 (56)	UK540KE	2CPX031004R9999	
With screwable N/PE terminals	710 x 350 x 95	48 (56)	UK540SN	2CPX030822R9999	
With sheet steel door and cable inlet for tubes	683 X 327 x 88				

> Dimensions and technical details, see page 1/26

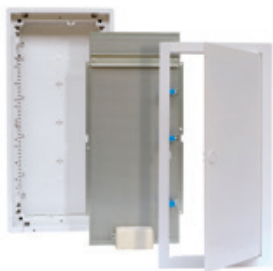
Notes

1

Media enclosure with and without trim frame and door

Consumer unit with control panel FPT500

1



UK530MV

2CPX030839R9999



UZM530MV

2CPX030985R9999



FPT520

2CPX030825R9999

Article	Remark	H x W x D in mm	Type	Ord. no.	Price
Flush-mounted consumer unit with trim frame and door					
Wall box with perforated sheet steel mounting plate, wire holders, DIN rail, wall grips, double socket with euro-plug insert, trim frame	Niche dimensions	585 x 350 x 95	UK530MV	2CPX030839R9999	
	Wall cut out dimensions	558 x 327 x 88			
	Mounting plate dimensions	447 x 277 x 1.5			
and door with ventilation holes	Niche dimensions	710 x 350 x 95	UK540MV	2CPX030840R9999	
	Wall cut out dimensions	638 x 327 x 88			
	Mounting plate dimensions	572 x 277 x 1.5			

Flush wall box without door					
With perforated sheet steel mounting plate, wire holders, DIN rail and wall grips	Niche dimensions	585 x 350 x 95	UZM530MV	2CPX030985R9999	
	Wall cut out dimensions	558 x 327 x 88			
	Mounting plate dimensions	447 x 277 x 1.5			
	Niche dimensions	710 x 350 x 95	UZM540MV	2CPX030986R9999	
	Wall cut out dimensions	683 x 327 x 88			
	Mounting plate dimensions	572 x 277 x 1.5			

	Internal dimensions of the control panel	External dimensions of the control panel			
Article	H x W in mm	H x W x D in mm	Type	Ord. no.	Price
Consumer unit with control panel					
Wall box with device support, removable DIN rails. Aluminium control panel unprinted and unwired.	282 x 293	362 x 374 x 22	FPT510	2CPX030825R9999	
	403 x 293	487 x 374 x 22	FPT520	2CPX030826R9999	
	528 x 293	612 x 374 x 22	FPT530	2CPX030827R9999	
The control panel can be finished by the user or supplied already wired and printed by the factory. Control panels must only be mounted in vertical direction. Door hinged right.					

- > For the technical specifications of the UK500 trim frame dimensions, see page 1/26
- > For the usable surface of the front plate panel, see page 1/27

Multimedia enclosures

Accessories



ZX29



ZE225



ED57P10



ED44P10



ZX287P10

Article	Pieces	Type	Ord. no.	Price
Cross member For double socket	1	ZX29	2CPX061178R9999	
Double socket with euro-plug insert For supplying 230 V power to power supplies	1	ZE225	2CPX061177R9999	
Adapter To fasten the ED44P10 wire holder to the perforated sheet steel mounting plate	10	ED57P10	2CPX061179R9999	
Wire holder 28.5 mm	10	ED44P10	2CPX062335R9999	
Screws M4 x14 thread rolling For the perforated sheet steel mounting plate	10	ZX287P10	2CPX061180R9999	

Doors for UK500BN / UZM500MV

Door selection

1



2CPX030854R9999

BL520



2CPX030918R9999

BL528D



2CPX030858R9999

BL521D



2CPX030897R9999

BL527D

Article	To be used with...	Internal Trim frame dimension H x W x D in mm	External Trim frame dimension H x W x D in mm	Type	Ord. no.	Price
Trim frame with door (complete version)						
Colour: white, RAL 9016 sheet steel, powder coated	UK51...	282 x 297 x 33	352 x 367 x 9	BL510	2CPX030853R9999	
	UK52...	407 x 297 x 33	477 x 367 x 9	BL520	2CPX030854R9999	
	UK53...	532 x 297 x 33	602 x 367 x 9	BL530	2CPX030855R9999	
	UK54...	657 x 297 x 33	727 x 367 x 9	BL540	2CPX030856R9999	
art line						
Brushed stainless steel	UK52...	407 x 297 x 33	490 x 407 x 39	BL528D	2CPX030918R9999	
	UK53...	532 x 297 x 33	615 x 407 x 39	BL538D	2CPX030919R9999	
addition line						
Picture frame door brushed aluminium	UK52...	407 x 297 x 27	487 x 378 x 26	BL521D	2CPX030858R9999	
	UK53...	532 x 297 x 27	612 x 378 x 26	BL531D	2CPX030859R9999	
Picture frame door Colour: white, RAL 9016	UK52...	407 x 297 x 27	487 x 374 x 22	BL527D	2CPX030897R9999	
	UK53...	532 x 297 x 27	612 x 374 x 22	BL537D	2CPX030898R9999	

- > For the technical specifications of the UK500 trim frame dimensions, see page 1/26
- > For the dimensions of the trim frame door, see page 1/27

Doors for UK500BN / UZM500MV

Door selection



2CPX031252R9999

BL526C



2CPX031256R9999

BL527C



2CPX031260R9999

BL528C



2CPX030837R9999

BL530K



2CPX030990R9999

BL530L

	To be used with...	Internal dimensions of the trim cover	External dimensions of the trim cover			
Article		H x W x D in mm	H x W x D in mm	Type	Ord. no.	Price
colour line						
Trim frame with door Colour: Anthracite RAL 7016	UK51...	282 x 297 x 33	352 x 367 x 9	BL516C	2CPX031251R9999	
	UK52...	407 x 297 x 33	477 x 367 x 9	BL526C	2CPX031252R9999	
	UK53...	532 x 297 x 33	602 x 367 x 9	BL536C	2CPX031253R9999	
	UK54...	657 x 297 x 33	727 x 367 x 9	BL546C	2CPX031254R9999	
Trim frame with door Colour: Silver RAL 9006	UK51...	282 x 297 x 33	352 x 367 x 9	BL517C	2CPX031255R9999	
	UK52...	407 x 297 x 33	477 x 367 x 9	BL527C	2CPX031256R9999	
	UK53...	532 x 297 x 33	602 x 367 x 9	BL537C	2CPX031257R9999	
	UK54...	657 x 297 x 33	727 x 367 x 9	BL547C	2CPX031258R9999	
Trim frame with door Colour: Light grey RAL 7035	UK51...	282 x 297 x 33	352 x 367 x 9	BL518C	2CPX031259R9999	
	UK52...	407 x 297 x 33	477 x 367 x 9	BL528C	2CPX031260R9999	
	UK53...	532 x 297 x 33	602 x 367 x 9	BL538C	2CPX031261R9999	
	UK54...	657 x 297 x 33	727 x 367 x 9	BL548C	2CPX031262R9999	
vision line						
Transparent door	UK51...	282 x 297 x 33	352 x 367 x 9	BL510K	2CPX030835R9999	
	UK52...	407 x 297 x 33	477 x 367 x 9	BL520K	2CPX030836R9999	
	UK53...	532 x 297 x 33	602 x 367 x 9	BL530K	2CPX030837R9999	
	UK54...	657 x 297 x 33	727 x 367 x 9	BL540K	2CPX030838R9999	
media line						
Trim frame and door with ventilation holes Colour: white, RAL 9016 sheet steel, powder-coated	UZM530MV	532 x 297 x 33	602 x 367 x 9	BL530L	2CPX030990R9999	
	UZM540MV	657 x 297 x 33	727 x 367 x 9	BL540L	2CPX030991R9999	

> For the technical specifications of the UK500 trim frame dimensions, see page 1/26

Consumer units UK500

Spare parts and accessories

1



UZ7



UZM520



UZ4P2



UZ530G



UZ520A



UZ90P4



AP520



ZK507



ZA120

Article	Pieces	Type	Ord. no.	Price
Door hinge set UK500	1	UZ7	2CPX030917R9999	
Wall box with wall grips				
To be used with UK51...	1	UZM510	2CPX030805R9999	
To be used with UK52...	1	UZM520	2CPX030806R9999	
To be used with UK53...	1	UZM530	2CPX030807R9999	
To be used with UK54...	1	UZM540	2CPX030808R9999	
Wall grips To fix the wall box in two mounting depths	4	UZ4P2	2CPX062447R9999	
DIN rail with device support				
To be used with UK51...	1	UZ510G	2CPX030841R9999	
To be used with UK52...	1	UZ520G	2CPX030842R9999	
To be used with UK53...	1	UZ530G	2CPX030843R9999	
To be used with UK54...	1	UZ540G	2CPX030844R9999	
Cover with 90° quick-action screws				
To be used with UK51...	1	UZ510A	2CPX030845R9999	
To be used with UK52...	1	UZ520A	2CPX030846R9999	
To be used with UK53...	1	UZ530A	2CPX030847R9999	
To be used with UK54...	1	UZ540A	2CPX030848R9999	
Hollow-wall mounting set To modify the flush-mounting consumer unit into a hollow-wall consumer unit UK500 (type label and 20 cable ties included) wall thickness min. 8 mm, max. 35 mm	1	UZ90P4	2CPX062563R9999	
On wall mounting set For wall mounting or partially recessed installation				
To be used with UK51...	1	AP510	2CPX030849R9999	
To be used with UK52...	1	AP520	2CPX030850R9999	
To be used with UK53...	1	AP530	2CPX030851R9999	
To be used with UK54...	1	AP540	2CPX030852R9999	
N-RCD-busbar 3 x 16 mm ² + 2 x 10 mm ² Cu screwable	1	ZK507	2CPX030892R9999	
Touch-up applicator Colour RAL 9016, 12 ml	1	ZA120	2CPX039043R9999	

Consumer units UK500

Spare parts and accessories



UZ3



ZA89P20



UZ520M



UZ530L



UZ2



UZ1



ZA3P5



UZ5



UZ52



UZ84

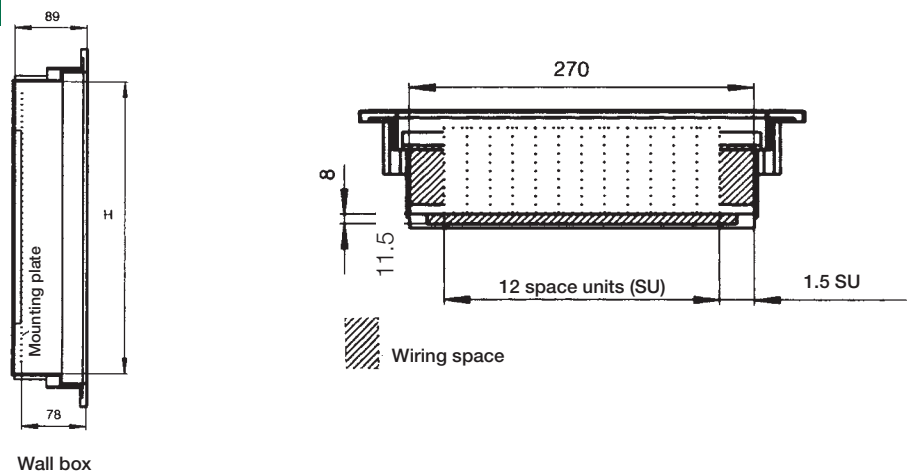
Article	Pieces	Type	Ord. no.	Price
Labelling system Self-adhesive, for identifying circuits, 17.5 mm	1	UZ3	2CPX030882R9999	
Screws 20 pcs. for fixing DIN rails and mounting plates	1	ZA89P20	2CPX062376R9999	
Mounting plate, sheet steel, galvanised To be used with UK51..., H x W = 130 x 255 mm To be used with UK52..., H x W = 255 x 255 mm To be used with UK53..., H x W = 380 x 255 mm To be used with UK54..., H x W = 505 x 255 mm	1 1 1 1	UZ510M UZ520M UZ530M UZ540M	2CPX030872R9999 2CPX030873R9999 2CPX030874R9999 2CPX030875R9999	
Perforated mounting plate for media enclosures To be used with UK53..., H x W = 447 x 227 mm To be used with UK54..., H x W = 572 x 227 mm	1 1	UZ530L UZ540L	2CPX030992R9999 2CPX030993R9999	
TIP-in-closure Colour: white	1	UZ2	2CPX030885R9999	
Closure with lock With 2 keys	1	UZ1	2CPX030870R9999	
Slot cover, 5 pcs. Colour: white, RAL 9016	5	ZA3P5	2CPX062385R9999	
Cable inlet for wall box Top or bottom, 1 to 4 rows	1	UZ5	2CPX030871R9999	
Vertical partition 1-row 2-row 3-row 4-row	1 1 1 1	UZ51 UZ52 UZ53 UZ54	2CPX030878R9999 2CPX030879R9999 2CPX030880R9999 2CPX030881R9999	
Horizontal partition	1	UZ84	2CPX030877R9999	

Consumer units UK500

Planning, assembly and dimensions

1

Dimension and space for wiring

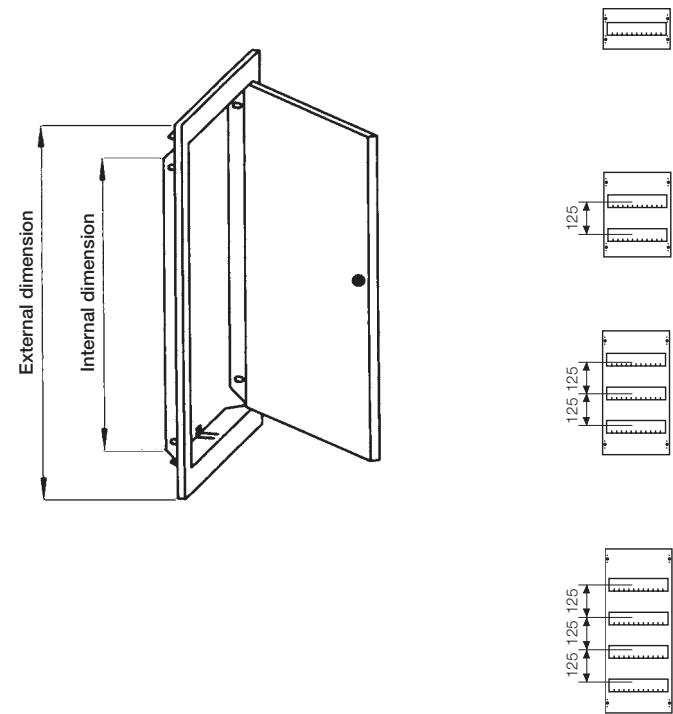


Power loss and height

DIN 43871 with over temperature ΔT^*

Type	Power loss (W)			Height in mm
	ΔT 20 K	ΔT 25 K	ΔT 30 K	
UK51...	10.0	13.0	16.0	250
UK52...	11.5	15.0	19.0	375
UK53...	14.5	19.0	24.0	500
UK54...	16.5	21.5	27.0	625

* ΔT is the temperature difference between upper temperature rise limit, mounted devices and ambient.



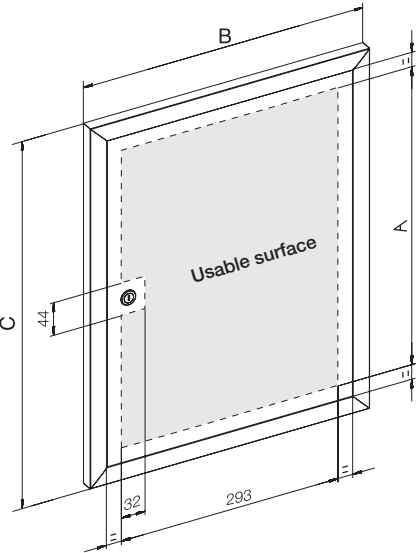
Trim frame dimensions

Type	Int. dimension H x W in mm	Ext. dimension H x W in mm	Weight in kg
BL510	282 x 297	352 x 367	1.5
BL516C	282 x 297	352 x 367	1.5
BL517C	282 x 297	352 x 367	1.5
BL517C	282 x 297	352 x 367	1.5
BL510K	282 x 297	352 x 367	1.5
BL520	407 x 297	477 x 367	1.9
BL526C	407 x 297	477 x 367	1.9
BL527C	407 x 297	477 x 367	1.9
BL528C	407 x 297	477 x 367	1.9
BL520K	407 x 297	477 x 367	1.9
BL530	532 x 297	602 x 367	2.3
BL536C	532 x 297	602 x 367	2.3
BL537C	532 x 297	602 x 367	2.3
BL538C	532 x 297	602 x 367	2.3
BL530K	532 x 297	602 x 367	2.3
BL530L	532 x 297	602 x 367	2.3
BL540	657 x 297	727 x 367	2.7
BL546C	657 x 297	727 x 367	2.7
BL547C	657 x 297	727 x 367	2.7
BL548C	657 x 297	727 x 367	2.7
BL540K	657 x 297	727 x 367	2.7
BL540L	657 x 297	727 x 367	2.7

Dimensions in mm

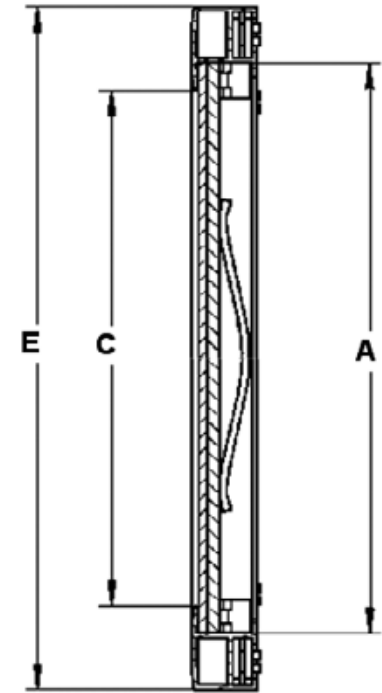
Consumer units UK500

Planning, assembly and dimensions



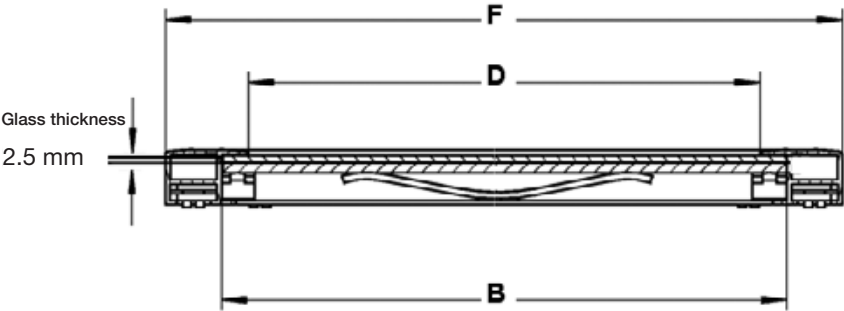
Control panel

Type	A	B	C
FPT510	278	374	362
FPT520	403	374	487
FPT530	528	374	612



Picture frame door

Type	A	B	C	D	E	F
BL521D	417	308	402	293	487	378
BL531D	542	308	526	293	612	378
BL527D	456	343	441	328	487	374
BL537D	581	343	566	328	612	374



Dimensions in mm


Modular consumer units AI10N / AI11N


1



Modular consumer units AI10N / AI11N



Basic enclosure
IP30 
DIN VDE 0603-1, DIN 43871
DIN rail spacing 150 mm
Colour: white, RAL 9016
Basic enclosure with connection slider, top and bottom
N/PE quick rails must be ordered separately

Modular enclosures
IP30 
DIN VDE 0603-1, DIN 43871
DIN rail spacing 150 mm
Colour: white, RAL 9016
Modular enclosure with connecting parts
N/PE quick rails must be ordered separately

The modular consumer units from STRIEBEL & JOHN are ideally suited to realize object-based combinations of consumer units. The basic enclosure AI10N with its cable inlets and the modular enclosure AI11N with the connection parts offer 12 space units respectively and can be assembled at a flick of the wrist.

The consumer units can be extended at any time by adding another modular enclosure. The cable inlets with numerous knock-outs for cables and conduits and additional knockouts at the sides and back ensure neat cable arrangements. The DIN rail spacing of 150 mm facilitates the connection of incoming and outgoing cables.

The pluggable N and PE rails are selected according to the number of cables and can be fastened to the top or bottom or also between rows.

The devices are protected by a transparent flap cover and are mounted to the device carrier rail that can be fastened to three common device widths.

Modular consumer units AI10N / AI11N

Spare parts and accessories

1



AI10N

2CPX031430R9999



AI11N

2CPX031431R9999



ZK130



ZA3P5



ZA51



ZA52



ZK108

Article	H x W x D in mm	Type	Ord. no.	Price
Modular consumer units IP30, 12 SU, □				
AI10N basic enclosure	240 x 250 x 95	AI10N	2CPX031430R9999	

Modular consumer units IP30, 12 SU, □				
AI11N modular enclosure in combination with basic enclosure	155 x 250 x 95	AI11N	2CPX031431R9999	

Article	Pieces	Type	Ord. no.	Price
N/PE rail mounted to carrier 3 x 16 mm ² + 10 x 10 mm ² , respectively	1	ZK130	2CPX038366R9999	
N/PE rail mounted to carrier 3 x 16 mm ² + 16 x 10 mm ² , respectively	1	ZK131	2CPX038367R9999	
N/PE rail mounted to carrier 5 x 16 mm ² + 20 x 10 mm ² , respectively	1	ZK132	2CPX038368R9999	

Slot cover Colour: white, RAL 9016	5	ZA3P5	2CPX062385R9999	
--	---	-------	-----------------	--

Flap cover	1	ZA51	2CPX038444R9999	
-------------------	---	------	-----------------	--

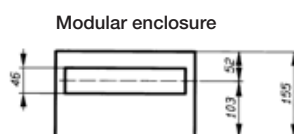
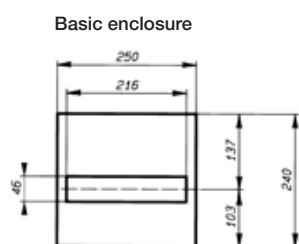
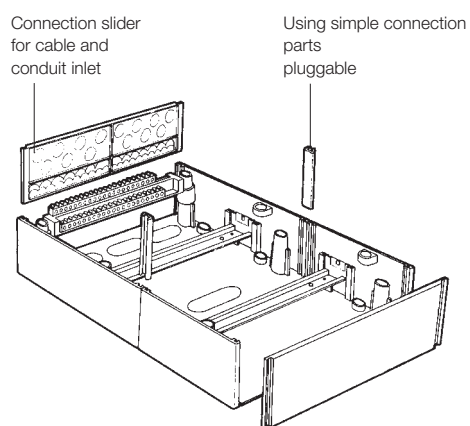
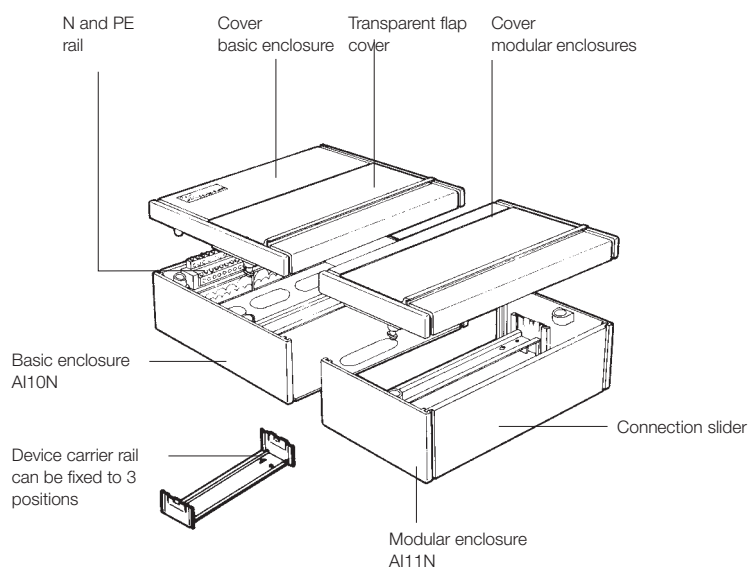
Connection slider for cables	1	ZA52	2CPX038445R9999	
-------------------------------------	---	------	-----------------	--

Connection terminal 3 x 25 mm ² to be screwed to N/PE rails with connection screws, to be used with N/PE rails for UAI08, AN05S, AN08S, AI10N, AI11N	1	ZK108	2CPX038330R9999	
--	---	-------	-----------------	--

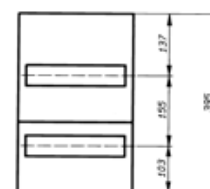
Modular consumer units AI10N / AI11N

Planning, assembly and dimensions

1



AI10N + AI11N



2-row combination

Hood-type consumer units A300



1



Hood-type consumer units A300N

N/PE Quick-terminals



Hood-type consumer units A300N
VDE 0603-1
DIN 43871
Degree of protection IP30

Protection class II, 
Removable device support
N/PE Quick-terminals
Colour RAL 9016, common white
Without door

1

The A300 by STRIEBEL & JOHN is well known by those who modernise and renovate old buildings. This practical and versatile hood-type consumer unit is ideally suited for wall-mounting assembly. It is not only quick and easy to assemble, but the timeless design ensures that it also fits harmoniously into any environment.

The basic enclosure with one-piece rear is made of robust plastic and is very durable. Thanks to the freely positionable N/RCD-terminal block, pre-printed lead-in for cable conduits, comfortable expansion to the top, bottom or sides, the A300 is extremely easy to install. The enlarged upper connection space on the 2, 3 and 4-row models, as well as the time-saving snap-in device support, make work on the consumer unit even easier and more comfortable.

Specially designed accessories and spare parts guarantee that the A300 will be a flexible and reliable partner for the renovation and modernisation of old buildings as well as new premises.

Hood-type consumer unit A300N without door

N/PE Quick-terminals

1



A324N3 with mounted
N/PE quick-terminals (Example)



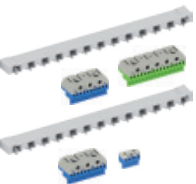
A312N2



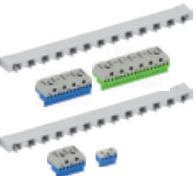
A324N3



A336N3



A348N3



Surface-mounted hood-type consumer units – A300N, IP30

VDE 0603-1

DIN 43871

Removable device support

With N/PE Quick-terminals

Colour RAL 9016, common white

Without door

Article	H x W x D in mm	SU	Type	Ord. no.	Price
Surface-mounted hood-type consumer units – A300N, IP30					
1-row With mounted N/PE quick-terminals: Quick-carrier: ZK12 Quick-terminal: ZK82B, ZK51B, ZK143G	245 x 295 x 110	12 / 13*	A312N2	2CPX031291R9999	
2-row With mounted N/PE quick-terminals: Quick-carrier: ZK12 Quick-terminal: 2 x ZK82B, ZK50B, ZK144G	385 x 295 x 110	24 / 26*	A324N3	2CPX031292R9999	
3-row With mounted N/PE quick-terminals: Quick-carrier: ZK12 Quick-terminal: ZK113B, ZK175G Quick-carrier: ZK12 Quick-terminal: ZK113B, ZK50B	510 x 295 x 110	36 (39*)	A336N3	2CPX031293R9999	
4-row With mounted N/PE quick-terminals: Quick-carrier: ZK12 Quick-terminal: ZK114B, ZK206G Quick-carrier: ZK12 Quick-terminal: ZK28B, ZK50B	635 x 295 x 110	48 / 52*	A348N3	2CPX031294R9999	

*With sheet steel or a transparent doors, there will be one space unit less as reserve.

Hood-type consumer unit A300N

Transparent doors / sheet steel doors



A370

Article	Pieces	Type	Ord. no.	Price
Transparent doors, to be used with:				
Hood-type consumer unit, 1-row, A312N2	1	A360	2CPX031635R9999	
Hood-type consumer unit, 2-row, A324N3	1	A361	2CPX031636R9999	
Hood-type consumer unit, 3-row, A336N3	1	A362	2CPX031637R9999	
Hood-type consumer unit, 4-row, A348N3	1	A363	2CPX031638R9999	
Sheet steel doors, to be used with:				
Hood-type consumer unit, 1-row, A312N2	1	A368	2CPX031631R9999	
Hood-type consumer unit, 2-row, A324N3	1	A369	2CPX031632R9999	
Hood-type consumer unit, 3-row, A336N3	1	A370	2CPX031633R9999	
Hood-type consumer unit, 4-row, A348N3	1	A371	2CPX031634R9999	

- > For A300 accessories, see page 1/38
- > For the technical specifications of the A300, see page 1/39

N/PE quick-terminals

Standardised, future-oriented and flexible

1

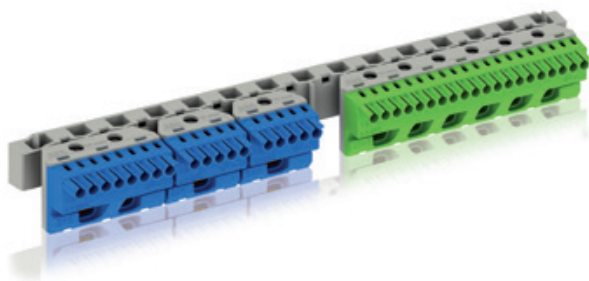
Tidy and flexible installation

The N/PE Quick-terminals simplify your work: Just choose the right terminal blocks and plug them in!

Extremely flexible in terms of expandability, these N/PE Quick-terminals are unmatched for safe, efficient and future-oriented conductor connections.

Product benefits

- Flexible terminal system for several N power circuits:
Screw connections: 2.5 to 25 mm² with steep conductor;
up to 25 mm² with flexible conductor with sleeve;
spring terminals: 1.5 to 4 mm² with steep conductor; 2.5 mm² with flexible conductor with sleeve
- Optimal when using several residual current circuit breakers (RCDs)
- Ease of expansion using connecting bridges
- Precise assignment of the terminal blocks (clear colour coding: N = blue, PE = yellow-green)
- Easy labelling of the terminals (DIN VDE 0603 Part 1) using pre-printed, self-adhesive number strips
- Wide range of applications: can be used with the UK500 and A300 consumer unit series, in all compact distribution boards, and with all meter-, wall-mounting and floor-standing cabinets.



quick carrier type ZK11

units

N/PE Klemmblöcke	N Quick-Steckklemmen	Schraubanschluss-technik	Federklemm-technik	PE Quick-Steckklemmen	Schraubanschluss-technik	Federklemm-technik
	ZK50B	0 x 25 mm ²	5 x 1,5 - 4 mm ²	-	-	-
	ZK51B	1 x 25 mm ²	5 x 1,5 - 4 mm ²	ZK51G	1 x 25 mm ²	5 x 1,5 - 4 mm ²
	ZK82B	2 x 25 mm ²	8 x 1,5 - 4 mm ²	ZK82G	2 x 25 mm ²	8 x 1,5 - 4 mm ²
	ZK113B	3 x 25 mm ²	11 x 1,5 - 4 mm ²	ZK113G	3 x 25 mm ²	11 x 1,5 - 4 mm ²
	ZK144B	4 x 25 mm ²	14 x 1,5 - 4 mm ²	ZK144G	4 x 25 mm ²	14 x 1,5 - 4 mm ²
	ZK175B	5 x 25 mm ²	17 x 1,5 - 4 mm ²	ZK175G	5 x 25 mm ²	17 x 1,5 - 4 mm ²
	ZK206B	6 x 25 mm ²	20 x 1,5 - 4 mm ²	ZK206G	6 x 25 mm ²	20 x 1,5 - 4 mm ²
	ZK50BT	0 x 25 mm ²	5 x 1,5 - 4 mm ²	-	-	-

N/PE quick-terminals

Accessories / equipment with the A300N



ZK113B



ZK50BT



ZK113G



ZK10P10



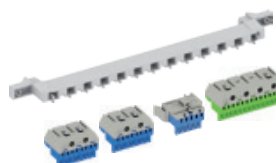
ZK12



ZK15



ZK215



ZK216

Article	Number of terminals 1.5 - 4 mm ²	Number of terminals 2.5 - 25 mm ²	External dimensions H x W x D in mm	Pieces	Type	Ord. no.	Price
N Quick-terminals For quick carriers	5	0	23 x 32 x 21	1	ZK50B	2CPX062750R9999	
	5	1	32 x 32 x 31	1	ZK51B	2CPX062751R9999	
	8	2	32 x 49 x 31	1	ZK82B	2CPX062752R9999	
	11	3	32 x 65 x 31	1	ZK113B	2CPX062753R9999	
	14	4	32 x 82 x 31	1	ZK144B	2CPX062754R9999	
	17	5	32 x 98 x 31	1	ZK175B	2CPX062755R9999	
	20	6	32 x 115 x 31	1	ZK206B	2CPX062756R9999	
N Quick-terminal with adapter ZK15 For lateral assembly to the UK5... , A3... or for fastening to the DIN rail	5	0	28 x 39 x 25	1	ZK50BT	2CPX062745R9999	
PE Quick-terminals For quick carriers	5	1	32 x 32 x 31	1	ZK51G	2CPX062757R9999	
	8	2	32 x 49 x 31	1	ZK82G	2CPX062758R9999	
	11	3	32 x 65 x 31	1	ZK113G	2CPX062759R9999	
	14	4	32 x 82 x 31	1	ZK144G	2CPX062760R9999	
	17	5	32 x 98 x 31	1	ZK175G	2CPX062761R9999	
	20	6	32 x 115 x 31	1	ZK206G	2CPX062762R9999	
Connecting bridges for Quick-terminals				10	ZK10P10	2CPX062763R9999	
Quick carriers For consumer units A300N Usable width for Quick-terminals 214 mm				1	ZK12	2CPX064981R9999	
Adapter for ZK50B Engaging the ZK50B N Quick-terminal in the adapter ZK15 leads to ZK50BT to be laterally fastened UK5... , A3 or to the DIN rail				1	ZK15	2CPX064984R9999	
N/PE quick-terminal-set for A3... In combination with quick-carrier ZK12, 13 units and quick-terminals: ZK82B: N 2 x 25 + 8 x 4 mm ² ZK51B: N 1 x 25 + 5 x 4 mm ² ZK143G: PE 3 x 25 + 11 x 4 mm ²				1 Set	ZK215	2CPX063130R9999	
N/PE quick-terminal-set for A3... In combination with quick-carrier ZK12, 13 units and quick-terminals: ZK82B: 2 x N 2 x 25 + 8 x 4 mm ² ZK50B: N 2 x 25 + 8 x 4 mm ² ZK144G: PE 4 x 25 + 14 x 4 mm ²				1 Set	ZK216	2CPX063131R9999	

Hood-type consumer units A300

Spare parts and accessories

1



ZA375P10



ZA300



UZ85



UZ2



UZ1



ZA3P5

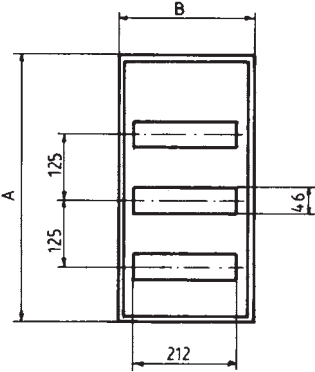


ZA15

Article	Pieces	Type	Ord. no.	Price
Connection parts	10	ZA375P10	2CPX062383R9999	
Cable fastening rail With cable tie	1	ZA300	2CPX038483R9999	
Horizontal partition	1	UZ85	2CPX030883R9999	
TiP-in-closure Colour: White	1	UZ2	2CPX030885R9999	
Closure with lock With 2 keys	1	UZ1	2CPX030870R9999	
Slot cover Colour: White, RAL 9016	5	ZA3P5	2CPX062385R9999	
Labelling system Self-adhesive, for identifying circuits 17.5 mm	1	ZA15	2CPX038226R9999	

Hood-type consumer units A300

Planning, assembly and dimensions



Allowed power loss hood-type consumer units A300
DIN 43871 with over temperature ΔT^*

Type	Power loss (W)		
ΔT 20 K	ΔT 25 K	ΔT 30 K	
A31...	12.5	16.5	21.0
A32...	15.0	20.0	25.0
A33...	17.0	22.0	28.0
A34...	20.5	27.0	34.0

*T is the temperature difference between upper temperature rise limit, mounted devices and ambient.



Type	A	B	C
A31...	245	295	110
A32...	385	295	110
A33...	510	295	110
A34...	635	295	110

Compact consumer units UAI08 Hood-type consumer units AN05S / AN08S

1



Compact consumer units UAI08

Hood-type consumer units AN05S / AN08S



Flush-mounted compact consumer unit UAI with door

IP40

Colour: RAL 7035

With N/PE rail

For those devices that do not need too many space units, STRIEBEL & JOHN offers the best solution with its flush-mounted compact consumer units. They are suited for single houses, flats, commercial buildings and hotels and can perfectly be integrated into beautiful environments.

Due to its compact dimensions, the unit can also be easily integrated to smaller niches. The rugged plastic enclosure offers the IP30 degree of protection and has several knockouts for the insertion of cables from the top, the bottom, the sides or the rear face. The door fitted with the compact consumer units can easily be switched from right to left hinge joints.



Surface-mounted hood-type consumer unit AN

IP30

Colour: White, RAL 9010

Surface-mounted hood-type consumer units with rear wall, without door

With N/PE rail

AN hood-type consumer units are the smallest units of the product range from STRIEBEL & JOHN. They are especially suited to additionally secure individual cables or circuits.

The ease of wall-mounting makes them also ideal for all renovation applications. The reliable touch guard with 90° quick-action screw offers knockouts for tidy cable arrangements.

AN hood-type consumer units are available in two enclosure sizes - with five or eight space units.

Compact consumer units UAI08

Hood-type consumer units AN05S / AN08S / Accessories

1



UAI08

2CPX031208R9999



AN05S

2CPX031460R9999



AN08S

2CPX031468R9999



ZK108

Article	H x W x D in mm	SU	Type	Ord. no.	Price
Flush-mounted compact consumer unit with door, IP40					
Niche dimensions	180 x 220 x 85	8	UAI08	2CPX031208R9999	
Trim frame dimension	90 x 229 x 17				

Hood-type consumer unit without door IP30					
Niche dimensions	135 x 150 x 70	5	AN05S	2CPX031460R9999	
Niche dimensions	135 x 204 x 70	8	AN08S	2CPX031468R9999	

Article	Pieces	Type	Ord. no.	Price
Connection terminal	1	ZK108	2CPX038330R9999	
3 x 25 mm ² to be screwed to N/PE rails with connection screws, to be used with N/PE rails for UAI08, AN05S, AN08S, AI10N, AI11N				

Notes

1